

Earthquakes

Earthquakes are caused when the earth's tectonic plates suddenly move. Most earthquakes occur near the tectonic plate boundaries. Earthquakes can cause lots of damage to roads, buildings and property. An earthquake is a natural disaster.

earthquake - a shaking or other movement of part of the earth's surface.

tectonic plates - separate areas of land that make up the earth's crust.

fault line - a crack in the earth's surface where the risk of earthquakes can be higher.

Richter Scale - a scale of levels from 0-10 used to measure the strength (magnitude) of an earthquake.

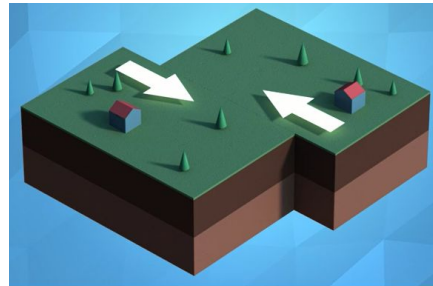
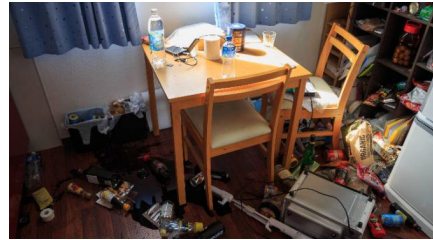
magnitude - the number given to show the strength and size of the earthquake.

migration - to move from one place to another.

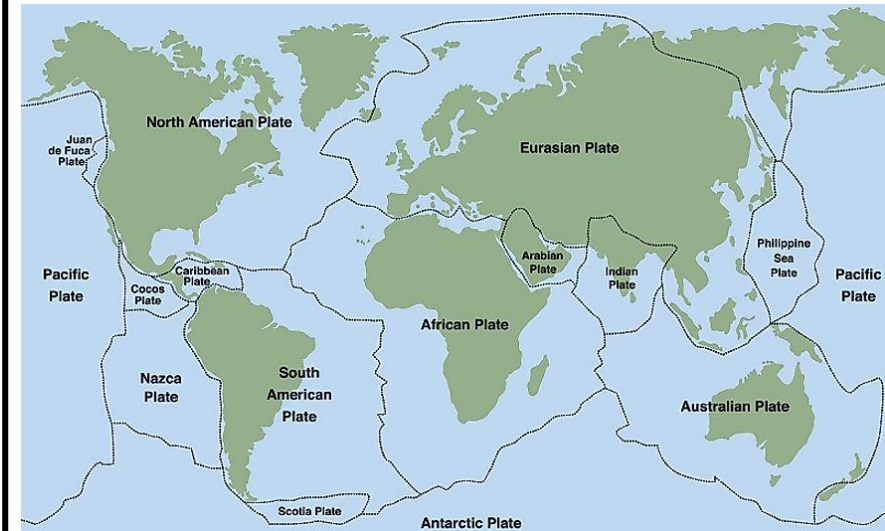
settlement - a place where humans settle or live and stay.

Richter Scale

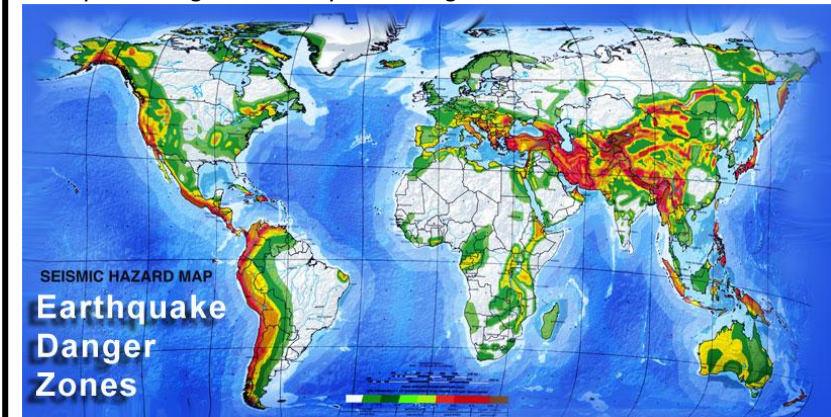
Developed by Charles Richter in 1935, it is a scale of levels from 0-10 used to measure the strength of an earthquake.



A map showing the earth's tectonic plates.



A map showing the earthquake danger zones.



Many earthquakes occur around the Pacific Ocean. People who live there, in countries such as Japan, are used to earthquakes happening and build earthquake-resistant buildings that sway with the shock waves rather than fall down. Although there are earthquakes in the UK, they are rare and so small that most people do not feel them.

For more information visit the BBC Bitesize website.

<https://www.bbc.co.uk/bitesize/topics/z849q6f/articles/zi89t39>

Scale 0	No quake felt.		Scale 5 lower	Furniture moves and objects fall if loose. Windows may shatter.	
Scale 1	Earthquake felt slightly when indoors.		Scale 5 upper	Heavy items like vending machines fall over. Drivers have trouble steering.	
Scale 2	Earthquake felt when indoors. Some objects like suspended lights sway.		Scale 6 lower	People have difficulty standing. Parts of buildings may crack. Doors can be damaged.	
Scale 3	Most people feel the quake. Objects like dinnerware move and make noise.		Scale 6 upper	People cannot stand upright and have to crawl to move about. Buildings destroyed.	
Scale 4	People wake up from sleeping. Quake felt by people outside. Objects fall.		Scale 7	The ground opens up, landslides occur and buildings are completely destroyed.	